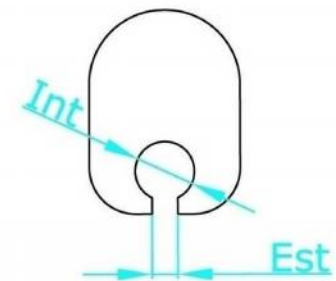
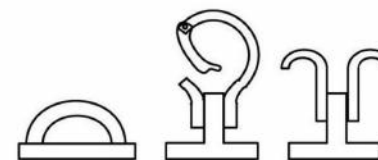


Max Luff	
From mast halyard exit to tack point	
R1	
From forestay fixing point to front track end	
R2	
From forestay fixing point to back track end	
Cut Up	
From deck to tack point	
Cut Back	
From tack point to luff groove	
L2 Max Leech	
From mast halyard exit to back track end	
L1 Min Leech	
From mast halyard exit to front track end	
H Groove	
From tack point to luff groove	

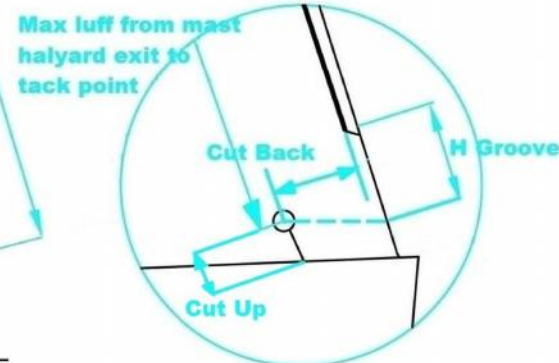
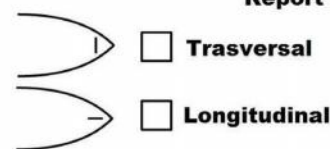


Int	
Est	

I	
J	

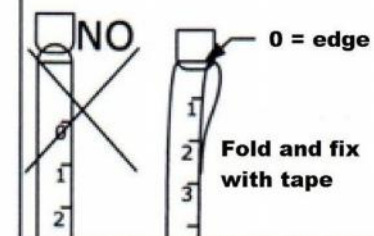


Report tack point type



How to use the measurer

Dimensions has to be reported from the 0. If the 0 is not coinciding with the edge, fold the measurer on itself until the 0 lays on the edge and fix it with some tape.



Genoa Form

